



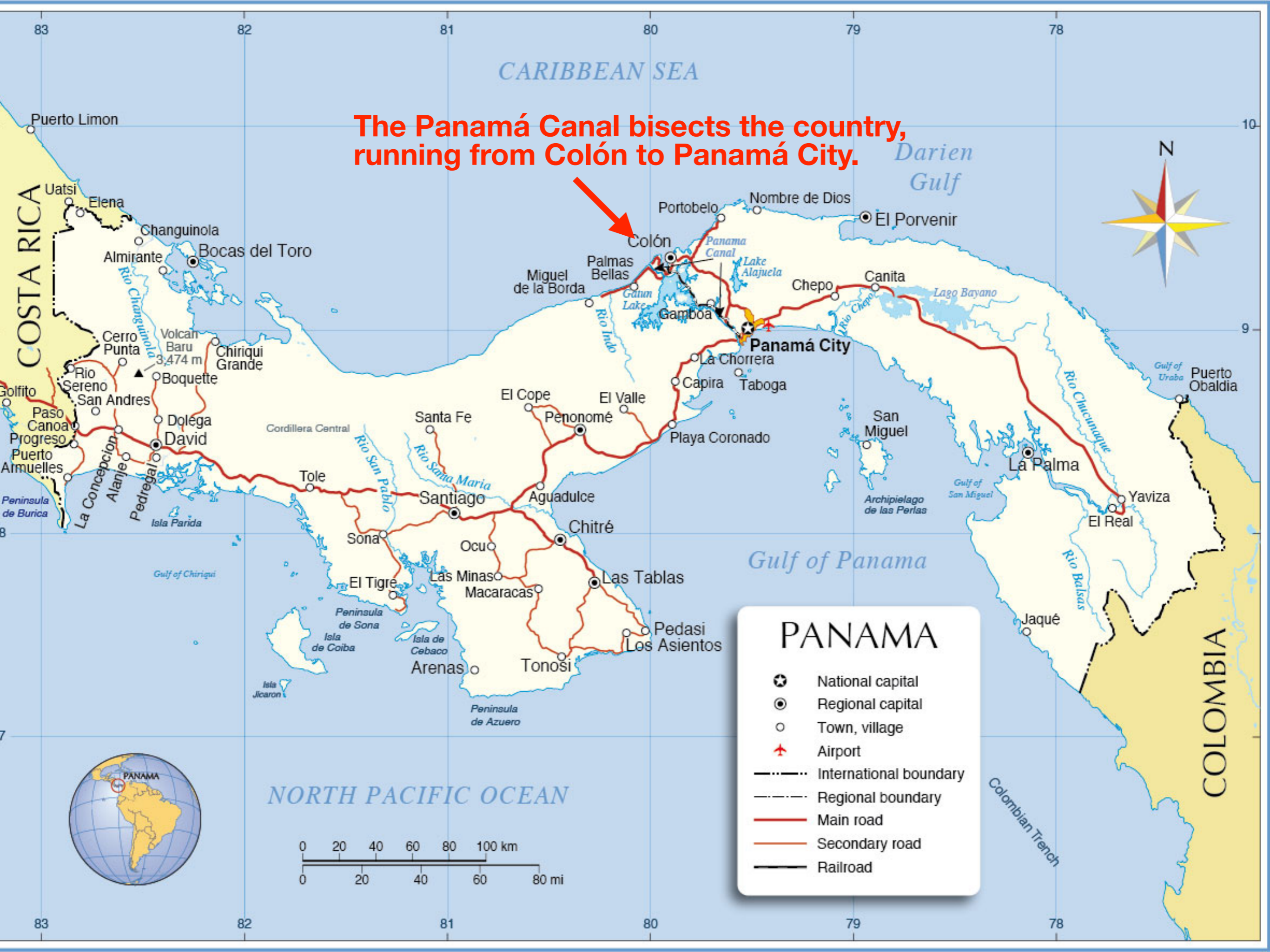
# Brilliant Butterflies of Panamá

**Sharon Wander**

# Central America and the Caribbean

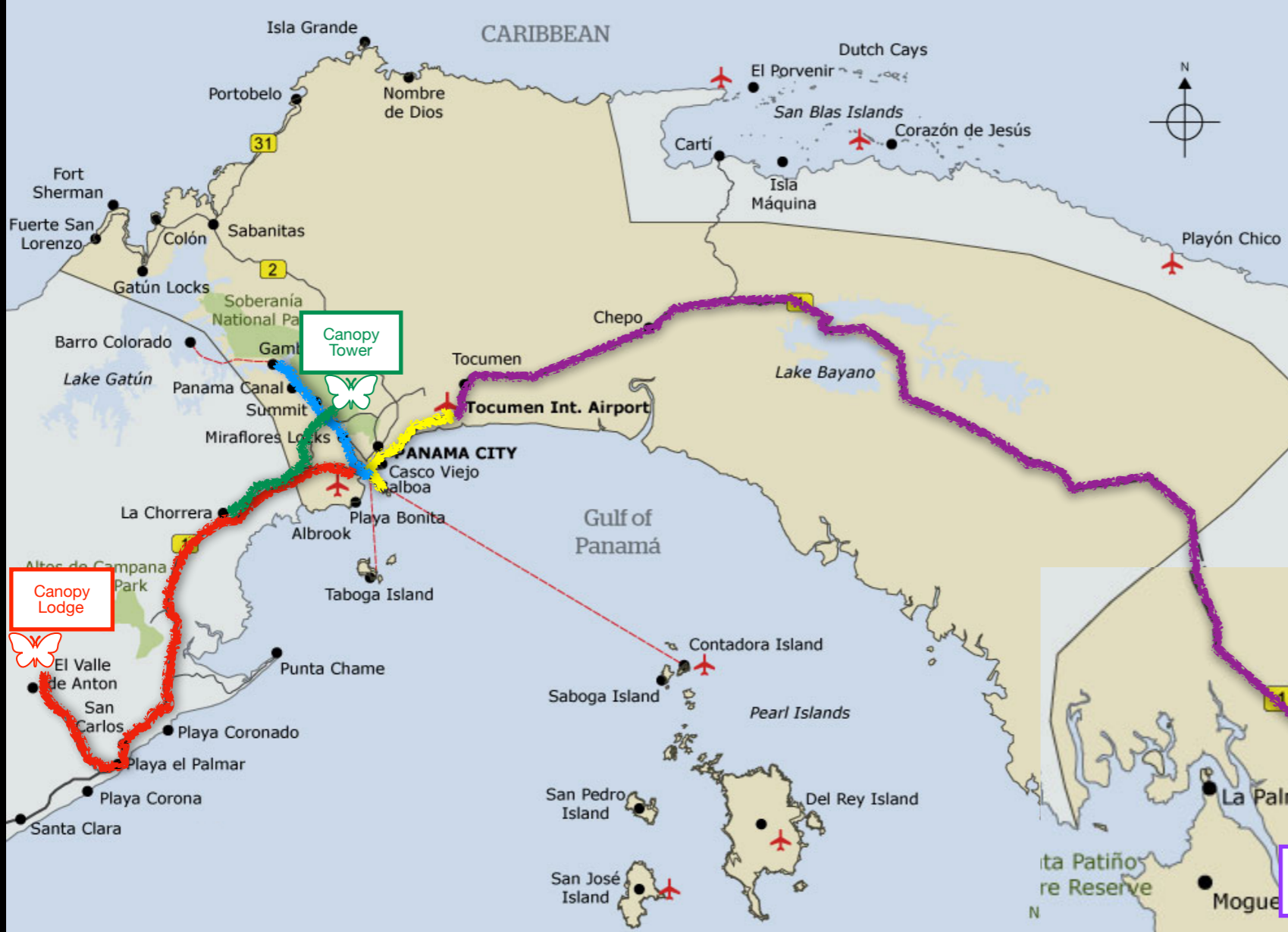


**The Panamá Canal bisects the country, running from Colón to Panamá City.**



## PANAMA

- ★ National capital
- ⊙ Regional capital
- Town, village
- ✈ Airport
- International boundary
- - - Regional boundary
- Main road
- Secondary road
- Railroad



## August 16-31, 2019

- 8/16: Arrive Tocumen Airport, butterfly around Riande Aeropuerto Hotel
- 8/17: Van from hotel to port , 1/2-day boat trip on Canal
- 8/18: Travel from hotel to Canopy Lodge
- 8/19-8/22 (AM): Butterflying at Lodge and various nearby locations
- 8/22 (PM)-8/24: Travel from Canopy Lodge to Canopy Tower
- Butterfly at Tower and nearby locations
- 8/25-8/30: Travel to Canopy Camp
- Butterfly at Camp and nearby locations, return to hotel 8/30
- 8/31: Return to New Jersey



## Panamá City

**Tour participants: Joe Burgiel (JB), Fred & Patti Pfeifer (FP, PP),  
Jim Springer (JS), Sharon & Wade Wander (SW, WW)**

**Tour company: Canopy Family Tours**

**Initials (above) on images in this program identify the photographer. If only one set of initials appears on a slide, all the images are by that photographer. Images digiscoped onto our phones by our guide Tino Sanchez are identified with initials TS. Downloaded images also identify the source, when available.**



**Our vessel for 1/2-day trip as far as Gamboa**



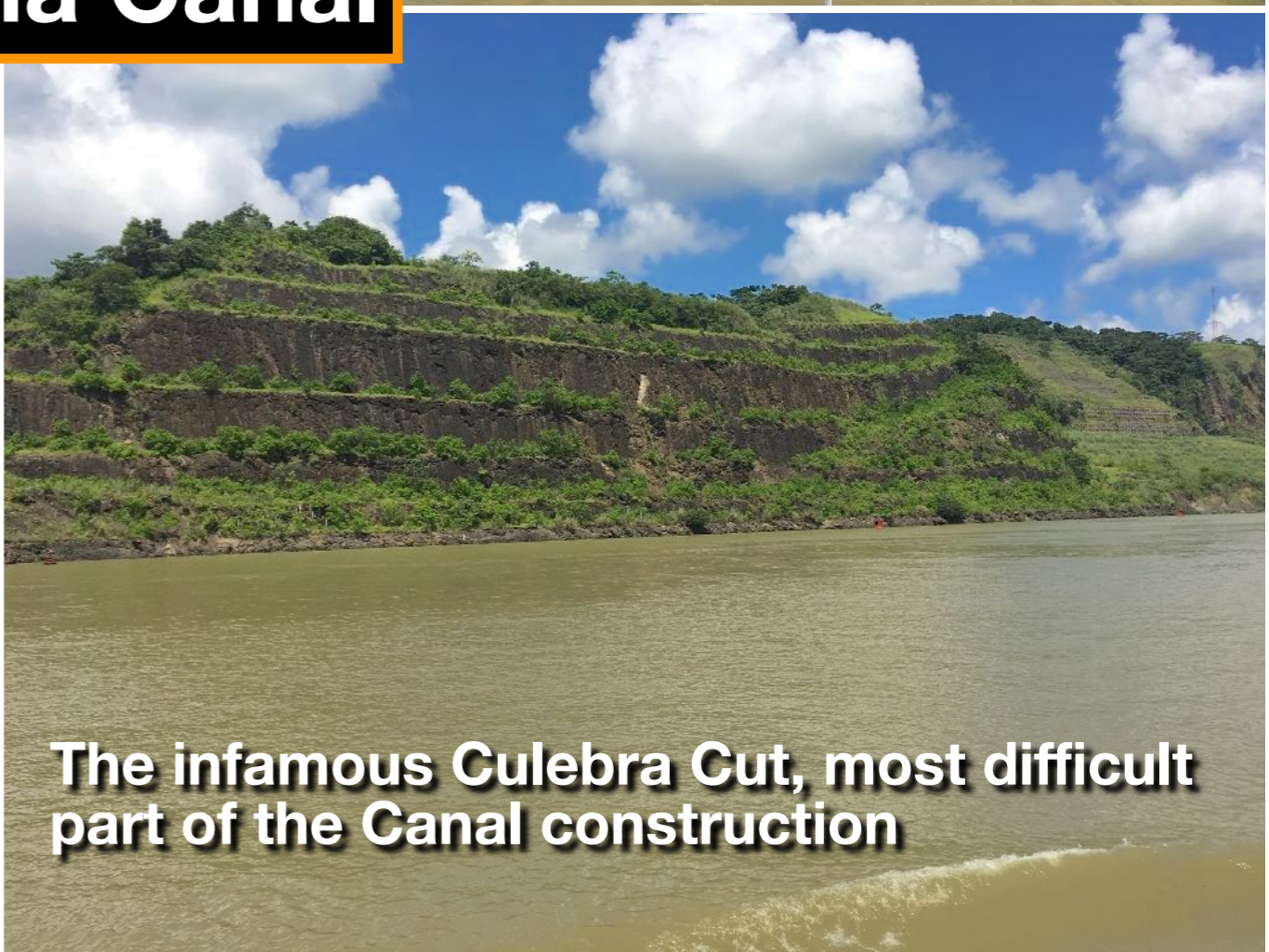
**Cables from these "mules" keep the ship centered - they do not tow it.**

**In Miraflores Locks**

# **Panamá Canal**



**SW**



**The infamous Culebra Cut, most difficult part of the Canal construction**



Common area



Lodge entrance

# Canopy Lodge 600-1200m



Wonderful meals, al fresco!



“Doing the list”

SW

# Swallowtails & Cattlehearts

Papilionidae



## Dual-spotted/Ilus Swallowtail

Many species have different names in Glassberg's *Butterflies of Mexico and Central America*, and on the lists provided by Canopy Family Tours. On this and the following slides, the Glassberg name always precedes the slash.



# Thoas Swallowtail



SW

# Whites and Sulphurs

## Pieridae

# Cattleheart White



**Cloudless Sulphur**



**Yellow-and-White/  
Pale Yellow**



**Mimosa Yellow**



**Ghost/White Yellow**



**WW**

**Cross-barred/  
Black-banded White**



**Brown-bordered White**



# **Hairstreaks and Blues**

**Lycaenidae**

# Costa Rican/White-tipped Cycadian



SW



# Imperial Sunstreak/Arcas



Digiscoped image



The look we wish we had gotten!

# Wavy-lined Sunstreak/ Mexican Arcas



TS



iNaturalist

**Sky-blue  
Greatstreak/  
Hairstreak**



**SW**

**Chiapas Stripe-streak/  
Togarna Hairstreak**



**SW**

**Dusky-blue Groundstreak**



**WW**



**Burnt-chocolate/Mycon**



**Red-Crescent/Narbal**



**SW**

**Red-spotted/  
Ziba Scrub-Hairstreak**

**Rusty-banded  
Groundstreak\***



**WW**

**\*Asterisked species were new for  
Canopy Family tours**

**Huntington's Blue**



**SW**

**Canopy Tower is a former U.S. radar station converted to an ecolodge.**

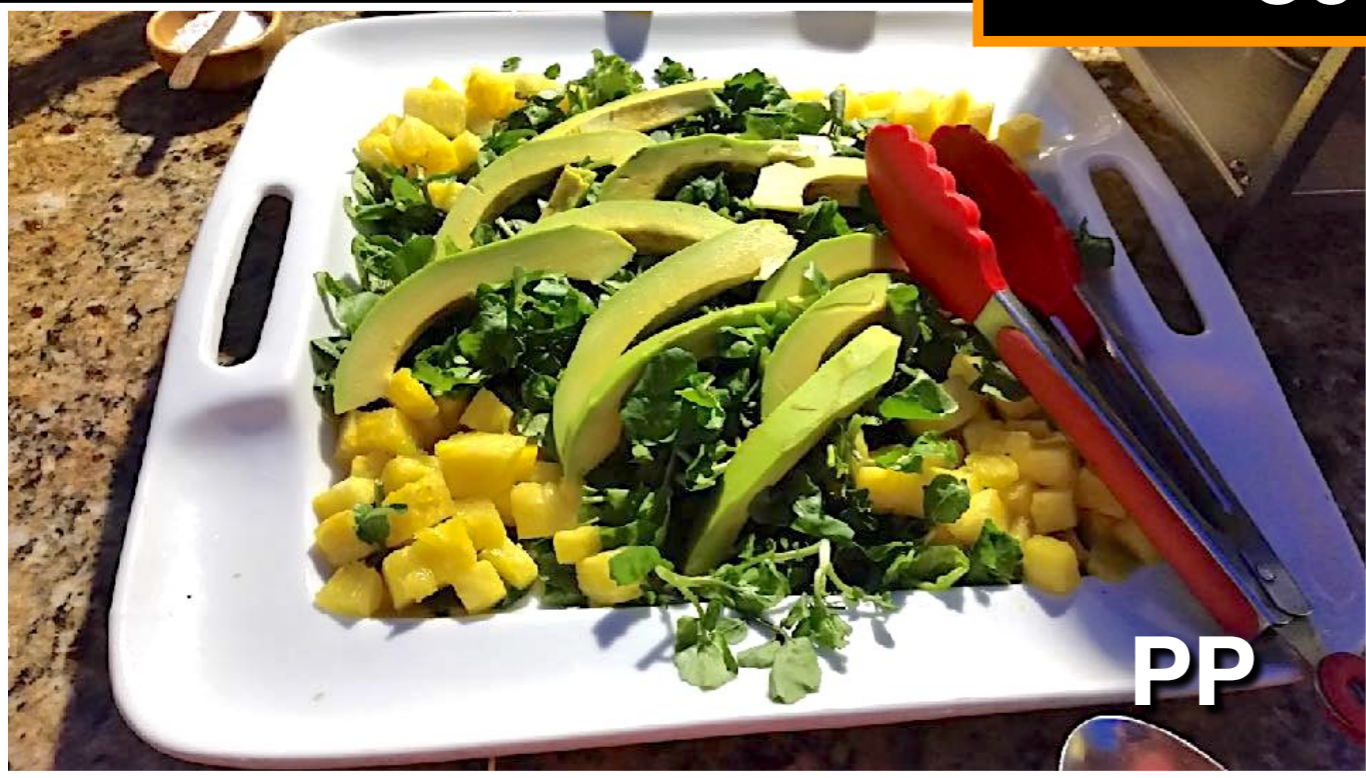


**SW**



**WW**

**Canopy Tower  
300m**



**PP**



**SW**

# **Metalmarks**

**Riodinidae**



**Purple-washed Eyemark/  
Eyed-Metalmark**



**SW**

**Tullius Eyemark/Metalmark**



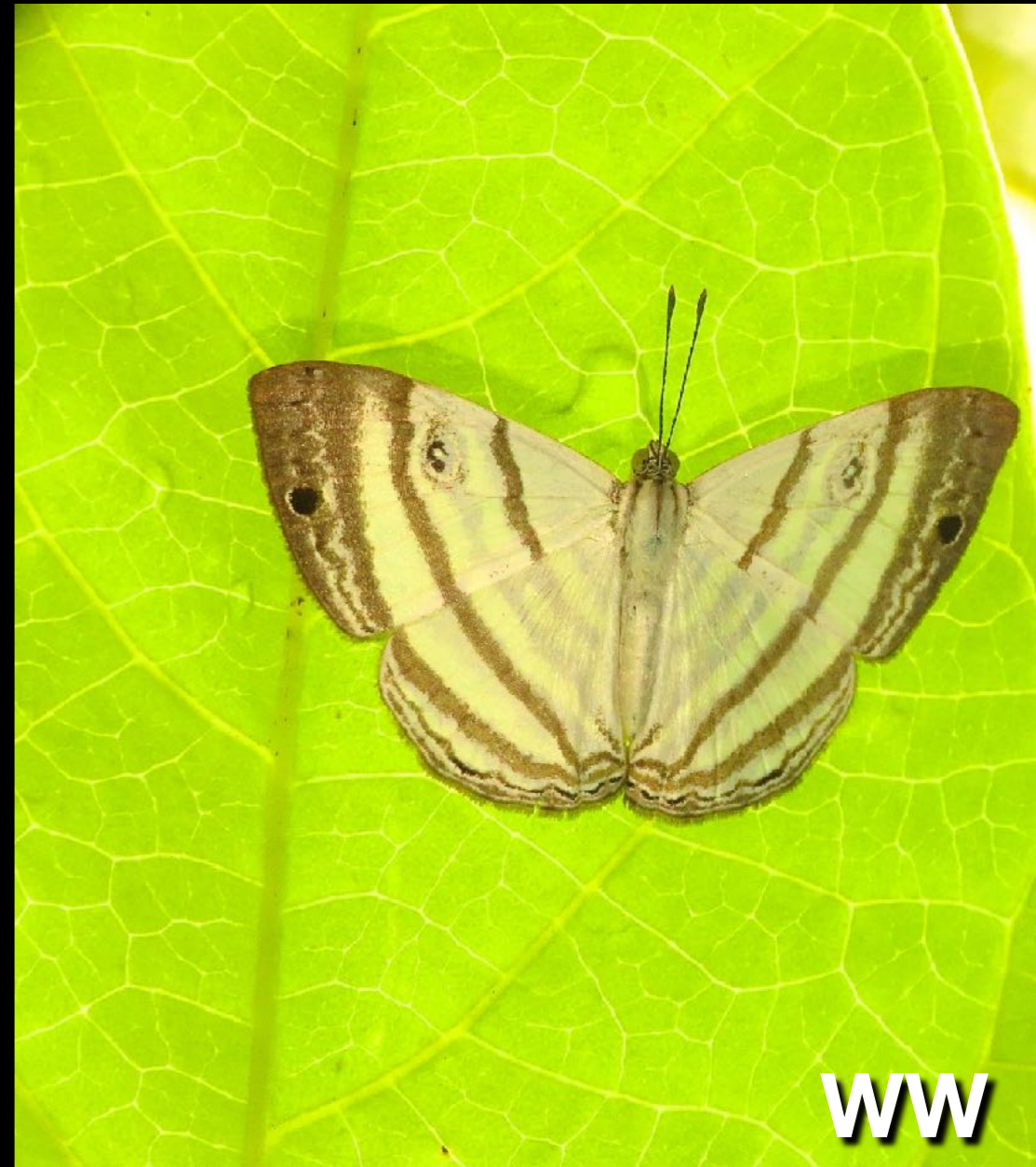
**WW**

**Guatemalan Whitemark/  
Vestalis Metalmark**



**JS**

**Cloudy-eyed Whitemark/  
Lagora Metalmark**



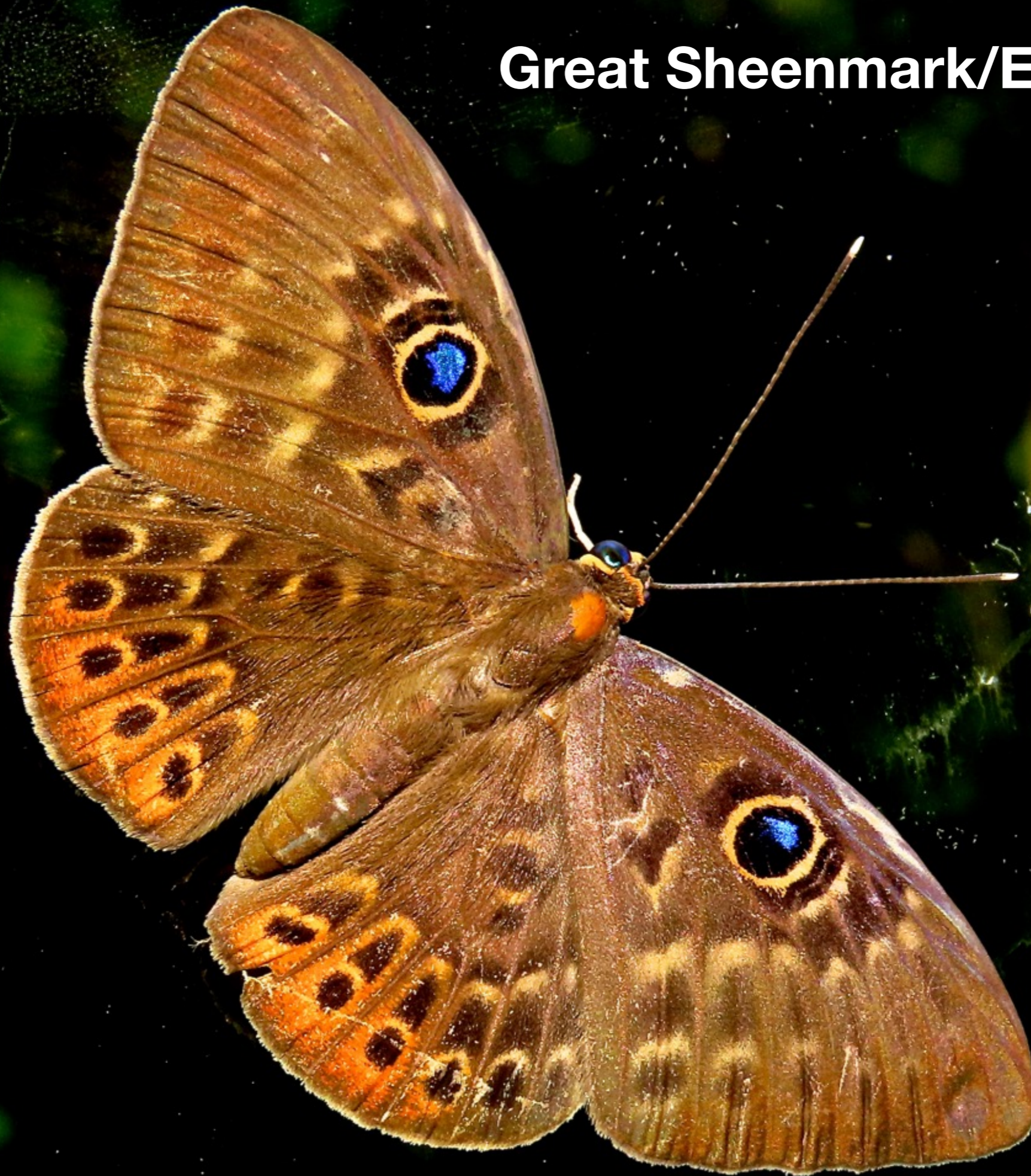
**WW**

# Blue-winged Sheenmark/Eurybia



**SW**

# Great Sheenmark/Eurybia



# Blue-and-Yellow Beautymark/Inca Metalmark F



© 2010 Kim Garwood

Female above



© 2011 D. H. Janzen and W. Hallwachs

Male below

**Atheist Scintillant/  
Iris Calephelis**



**Cloaked Scintillant/  
Barne's Metalmark**

**Brilliant Greenmark/  
Lampeto Metalmark**



**Studded Jewelmark/  
Elegant Anteros**



**Giant Jewelmark/  
Anteros**



**Elegant Jewelmark/  
Rounded Anteros**



**All 3 photos digiscoped by Tino**



**Orange-striped Tanmark/  
Emesis**



**JS**

**White-spotted Tanmark/  
Emesis**



**SW**

**Sailor's Lemmark/  
Irenia Metalmark**



# Phasma Metalmark



**Carmine Grayler/  
Lucianus Metalmark**



**Large Hemmark/  
Azanoides Metalmark**



**WW**

Lunch in the field



PP



Our trusty vehicle, and friend

SW

Converging on a hapless butterfly



JS

In Canopy Tower lobby, with Tino



FP


# Brushfoots

## Nymphalidae

***Monarchs, Tigerwings, and Clearwings***  
***Danainae***





A Variable Prestonian/Cream-spotted Tigerwing butterfly is perched on a branch with red flowers. The butterfly has black wings with a broad orange band and a row of white spots along the edge. The background is a lush green forest.

**Variable  
Prestonian/  
Cream-spotted  
Tigerwing**

**Yellow-tipped Ticlear/  
Tutia Clearwing**



**Tiger Ithomia/  
Iphinassa Clearwing**



# Variable/Menapis Tigerwings



**Paula's Oleria/Clearwing**



**WW**

**Cell-barred Ithomia/Diasia  
Clearwing**



**Frosty-spotted Ticlear/Timna  
Clearwing**



**JS**

# Variegated Ticlear/Clearwing



JB

***Heliconians/Longwings***  
***Heliconiinae***

# Juno Heliconian/Longwing



All species on next 4 slides  
are Heliconians/Longwings



# Common Green-Heliconian/ Green Longwing



**Malachite**  
for comparison



**SW**

**Least/Fine-lined**



**WW**

**Heart-spotted/Hecale**



**JB**

**Isabella's**



**SW**



**Grinning/Cydno**

**WW**



**Blue-and-White**

**JS**

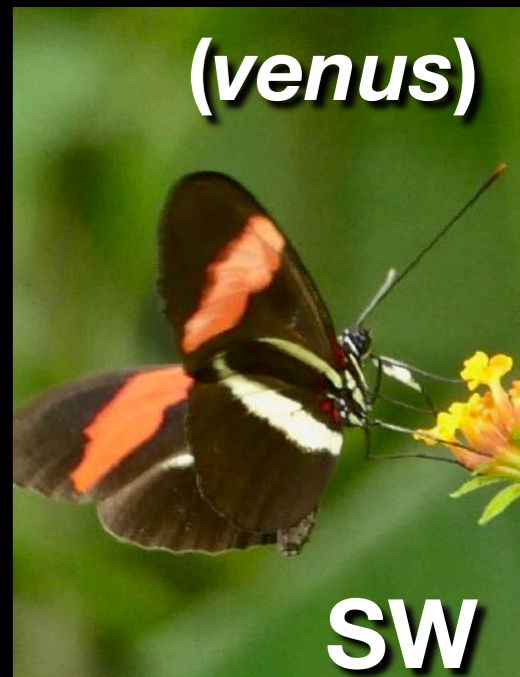


**JB**



**Erato/  
Crimson-patched  
(hydrara)**

**WW**

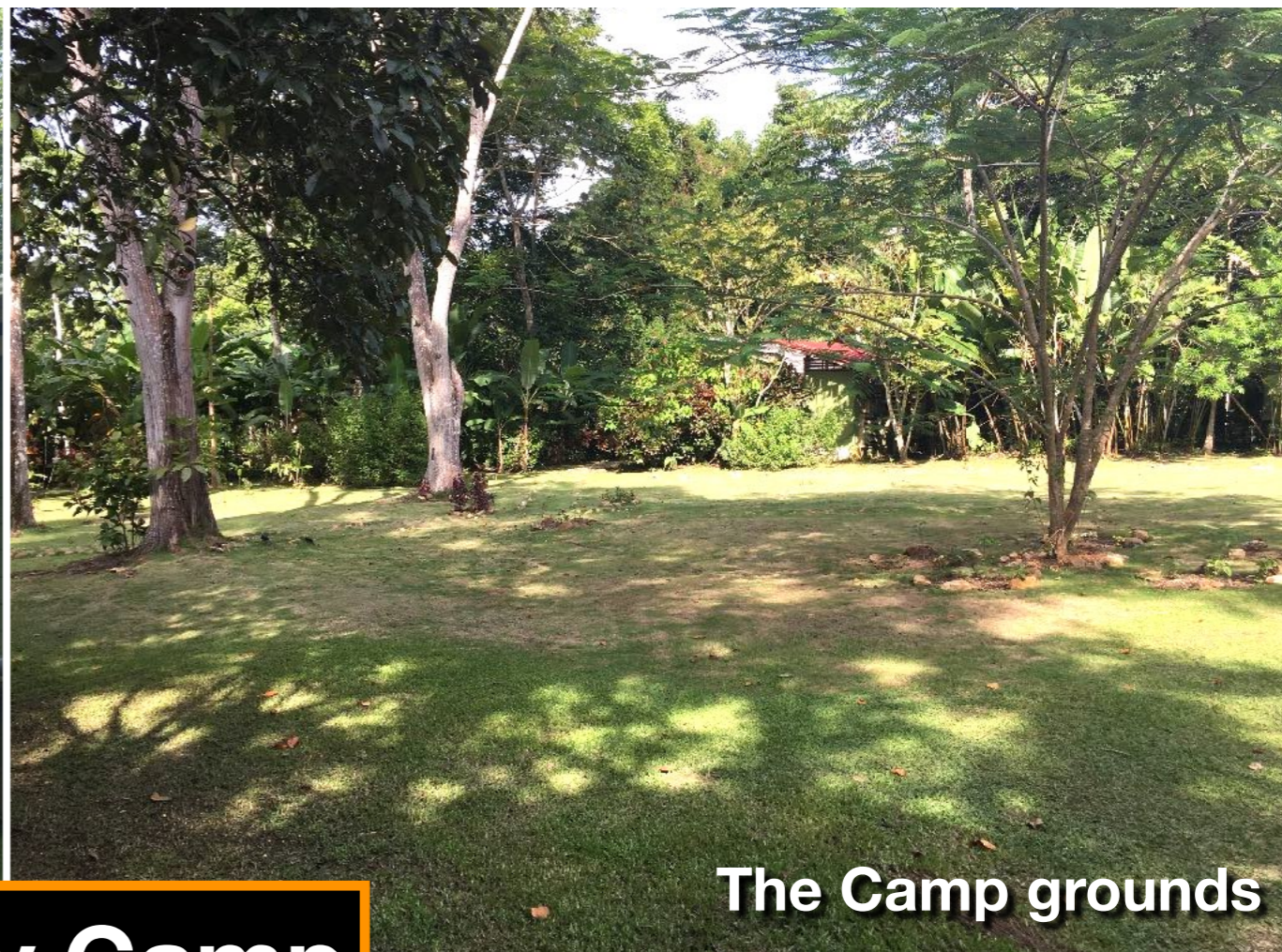


**(venus)**

**SW**



**Common area**



**The Camp grounds**

# Canopy Camp



**Shooting an Eighty-eight**

**PP**



**Comfortable African safari tents**

***Sisters***  
***Limenitidinae***

**Cytherea/Smooth-banded**



**JS**

**Venezuelan/Fundania**



**WW**

**Stitched/Erotia**



**SW**

**Spot-celled**



**WW**

**Pointer Sister**



**WW**

**Confusing Sister**



***Emperors  
Apaturinae***



**Silver Emperor M**



**SW**

***Banners, Crackers & Eighty-eights***  
***Biblidinae***

**Little Banner**



**WW**

**Orange Banner**

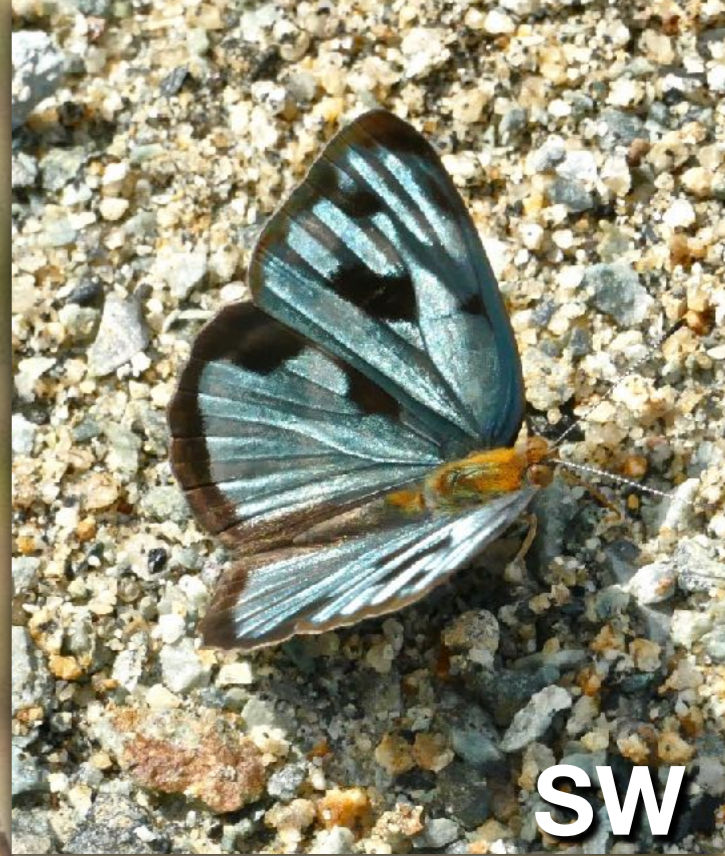


**SW**

**Guatemalan Catone/  
East Mexican Banner F**



# Four-spotted/Dark Sailor



SW

# Variable Cracker



**Red Cracker**



**Starry  
Cracker F**



# Common/Widespread Eighty-eight





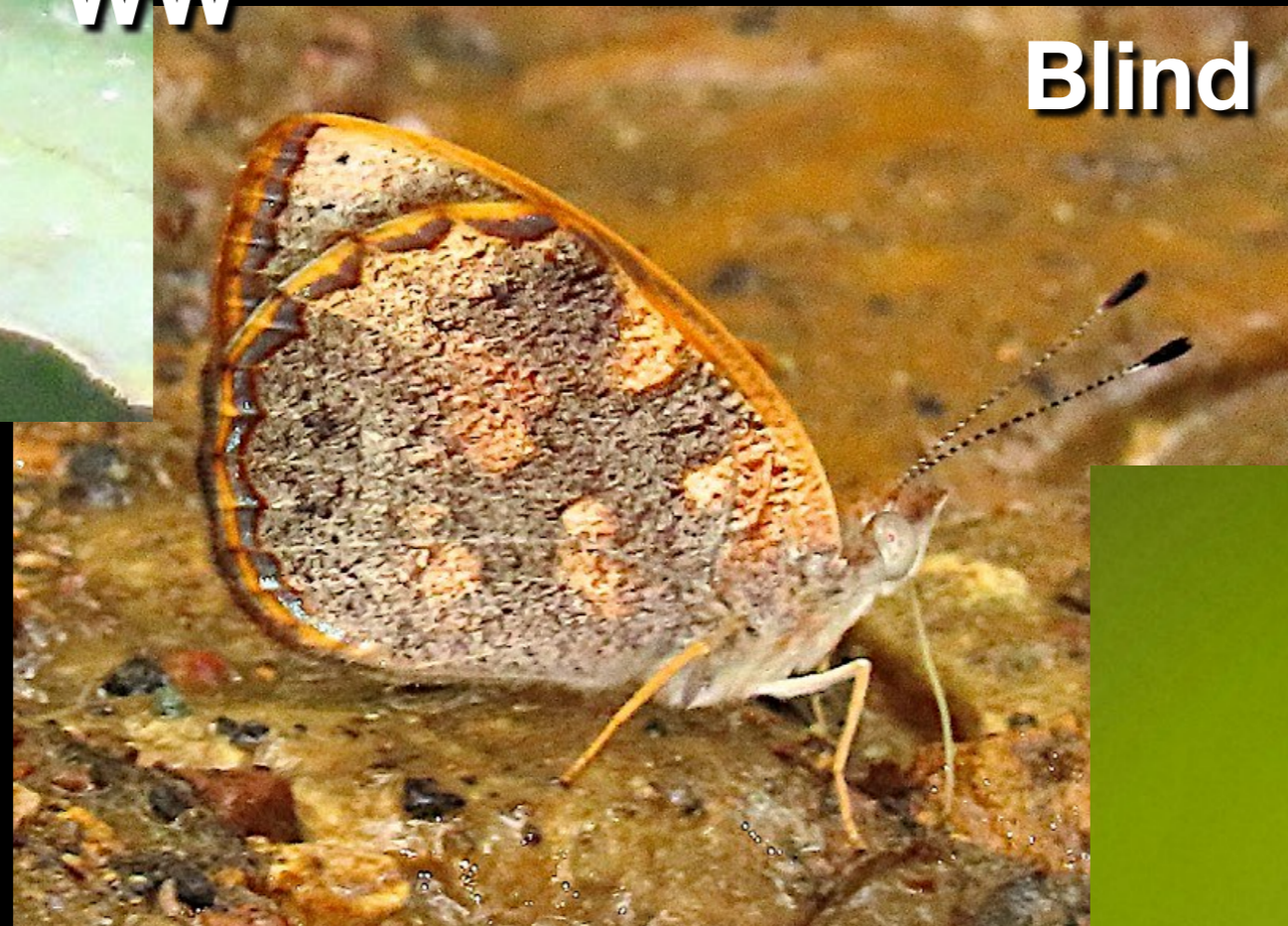
**Six-spotted**



**WW**

**More Eighty-eights**

**Blind**



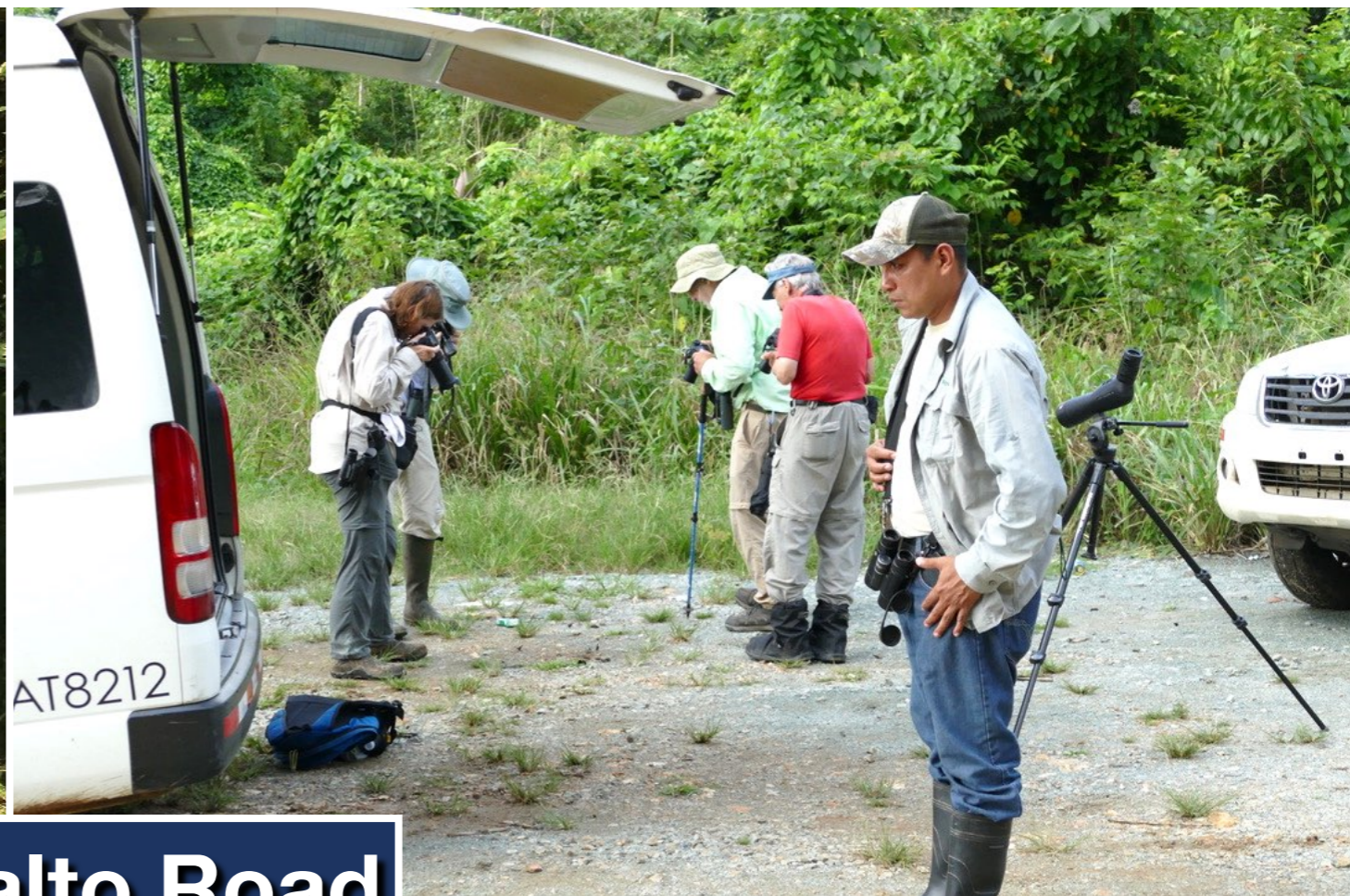
**FP**



**Blue-and-Orange**

**Two-eyed  
Eighty-eight**





**El Salto Road**



**SW**



***Daggerwings***  
***Cyrestinae***

**Many-banded  
Daggerwing**



***Beauties & Crescents, etc.***  
***Nymphalinae***

# White Peacock





**Red Peacock**

**WW**



**Banded Peacock**

**SW**



**WW**





**Orion  
Cecropian**

**SW**

# Three-banded/Variable Crescent



**White/Whitened  
Crescent**



**SW**

**Black-bordered Tegosa/  
Tegosa Crescent**



**SW**

**Creamy/Clio  
Crescent**



**WW**

**Orange-patched Crescent**



**SW**

Some of the  
many variations of  
**Bordered Patch**



**SW**



**WW**



**SW**



**JB**

# Ezra Checkerspot



# Tropical Buckeye



SW

***Leafwings***  
***Charaxinae***

**Angled**



**Blue-barred/Ryphea**



**Cramer's/  
Isidora**



**Boisduval's/Edge**



**Aureole**





**White-spot  
Prepona**



**WW**

butterfliesofamerica.com



**One-spotted  
Prepona**



Canoe trip on the Chucumanga River...



FP



SW



...to Indigenous coffee plantation



WW



The Indigenous village Neuva Vigia



Beautiful artisan basketry for sale



### On display at Canopy Camp—

These masks are hand-made by the women of the Embera-Wounan villages of Nazaret and Mogue, located along the rivers Chico and Mogue in the province of Darién. They are made from the strong fibers of the Panama hat plant and the Panamanian Black Palm, locally known as 'chunga'. Their bright colors come from natural dyes from roots, plants, seeds and fruits found in the forest.

The masks represent the forest animals that live near these villages, each with a special significance to the indigenous people of Darién. Monkeys traditionally represent sentinels of the forest, as their cries can be heard for long distances. The jaguar is a symbol of strength and battle. Owls are considered sentries, and the bright colors of the toucan and parrot, common birds in the area, call the attention of the people. The Harpy Eagle, the national bird of Panama, is highly respected as the largest and most powerful raptor, and nests in the forests of Darién.



Jaguar



Owl



Peccary?



Harpy Eagle

***Morphos, Owls & Satyrs***  
***Satyrinae***

**Common Morpho**



**Canopy Family**

**WW**

**Linnaean Owlet/  
Cassia's  
Owl-Butterfly**





# Yellow-fronted/Pale Owl-Butterfly



# Hermes Satyr



**Transgressive Blackeyed-Satyr/ Jesia Satyr**      **Blue-gray Big-eyed Satyr**



**Gold-stained Satyr**



**Yellow-spiked Ur-Satyr**



**Celia's Ur-Satyr**



# Skippers

## Hesperiidae

***Longtails, Flashers, & Scarlet-eyes***  
***Eudaminae***

# Common Ghost-Skipper/Phanus



SW

# Dimorphic Skipper F



Communal roost with dark males



WW

**Broken  
Silverdrop**





**Tanna Longtail**



**WW**

**White-tailed Longtail**



**WW**



**Great-white Longtail**

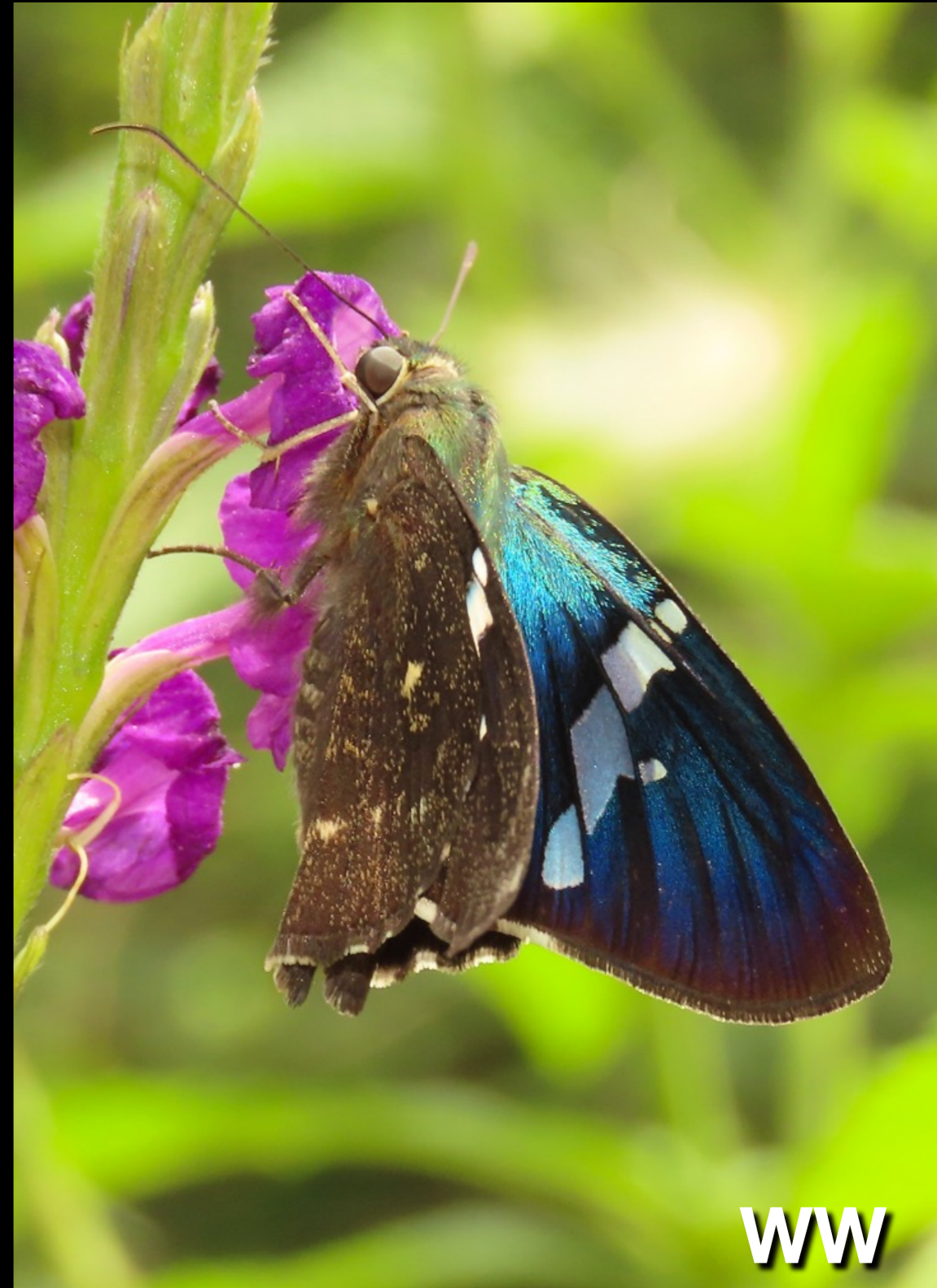
**JS**

**Two-barred Flasher complex**



**SW**

**White-spotted Flasher**



**WW**

**Gilbert's Flasher**



**JB**

**Yellow-tipped Flasher**



**WW**

**Green Flasher**



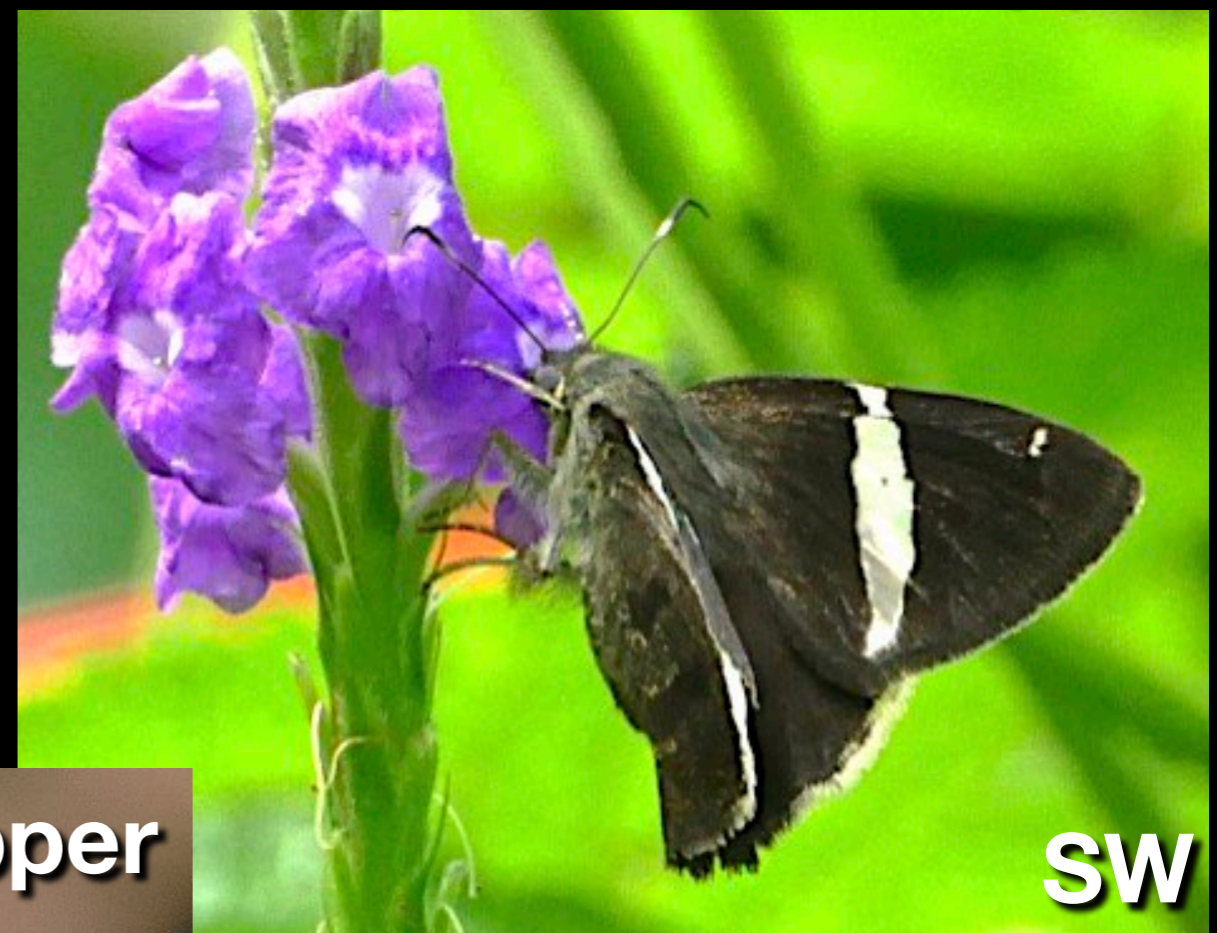
**WW**

**Spiky/Broad Banded-Skipper**



**SW**

**Sharp Banded-Skipper**



**SW**

**Falcate Skipper**



**WW**

**Blushing/Big-spotted  
Scarlet-eye**



**SW**

**Freckled/Black-cheeked  
Scarlet-eye**



**WW**



FP



JS



PP



Sloth!

SW

***Spreadwing Skippers***  
***Pyrginae***

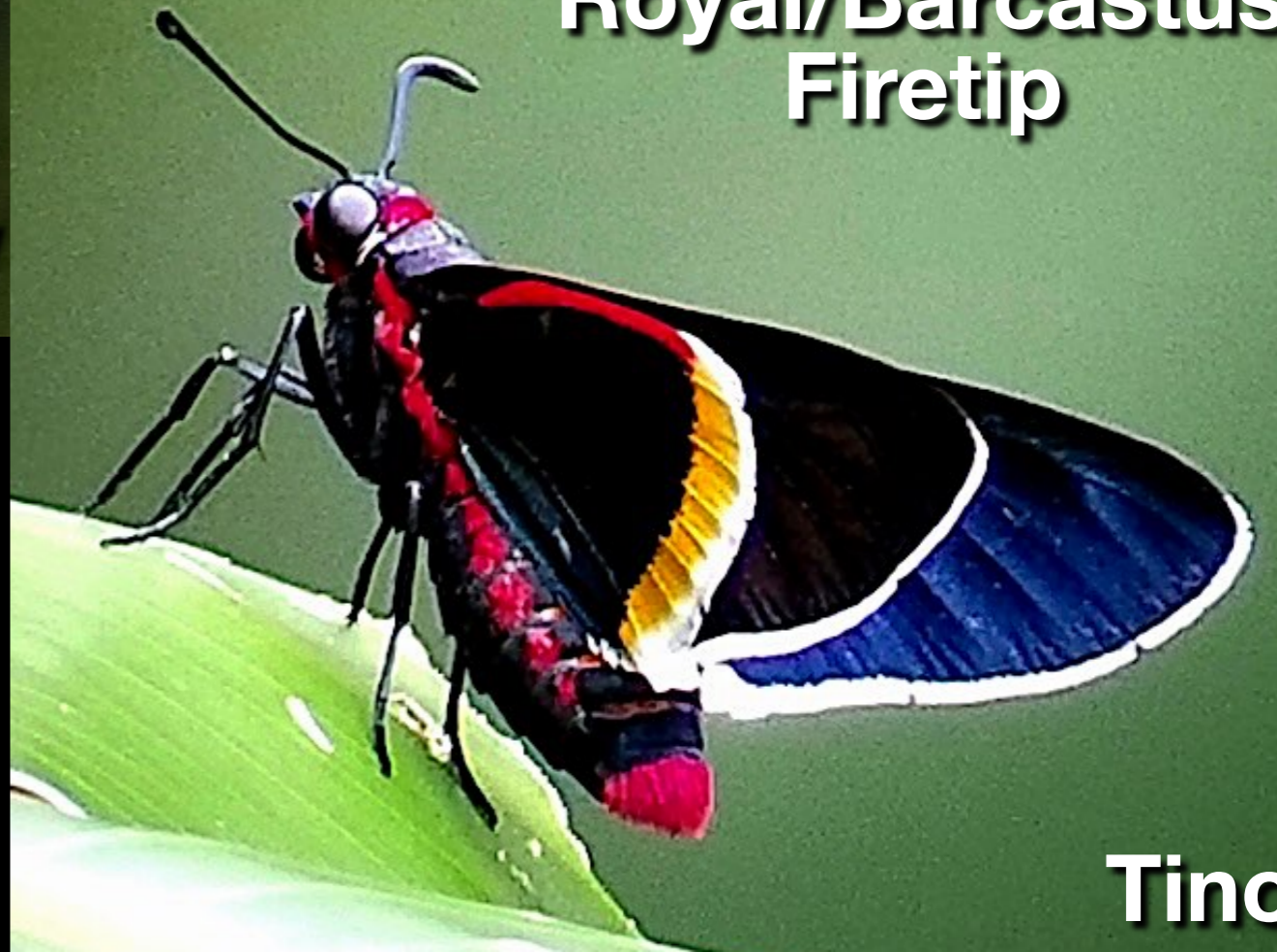


**Red-headed  
Firetip**



**WW**

**Royal/Barcastus  
Firetip**



**Tino**

# Red-collared/Scylla Firetip



# Golden-snouted Scallopwing/Sootywing



JS

# Brilliant/Glorious Blue-Skipper



**Two-toned/Rainforest  
Hoary-Skipper**



**SW**

# Northern Snout-Skipper\*



JS

# Cherry-spot/Stigma Skipper



***Ruby-eyes & Grass-Skippers***  
***Hesperiinae***



**Violet-banded Skipper**



**Glassy-winged Skipper**



**Costa Rican Slow-Skipper**



aka  
**Hermione  
Skipper**

**Radiant Brown-Skipper**



**WW**

**Alana White-Skipper**



**JS**

**Dyson's Silverpatch**



**SW**

**Cramer's/Sergestus**



**WW**

**Ruby-eyes**



**WW**

**Bell's/Alternate**



**FP**

**White-edged**



**SW**

**Green-  
backed**



**WW**

**Cell-streaked/  
Complanula Skipper**



**Thanks to trip participants/photographers:**

**Joe Burgiel**

**Fred Pfeifer**

**Patti Pfeifer**

**Jim Springer**

**Wade Wander**

**And to Canopy Family guides:**

**Linda Harrison**

**Tino Sanchez**

**Jerry Harrison**



**What ARE these things, anyway?**



**Find out at  
the March meeting!**